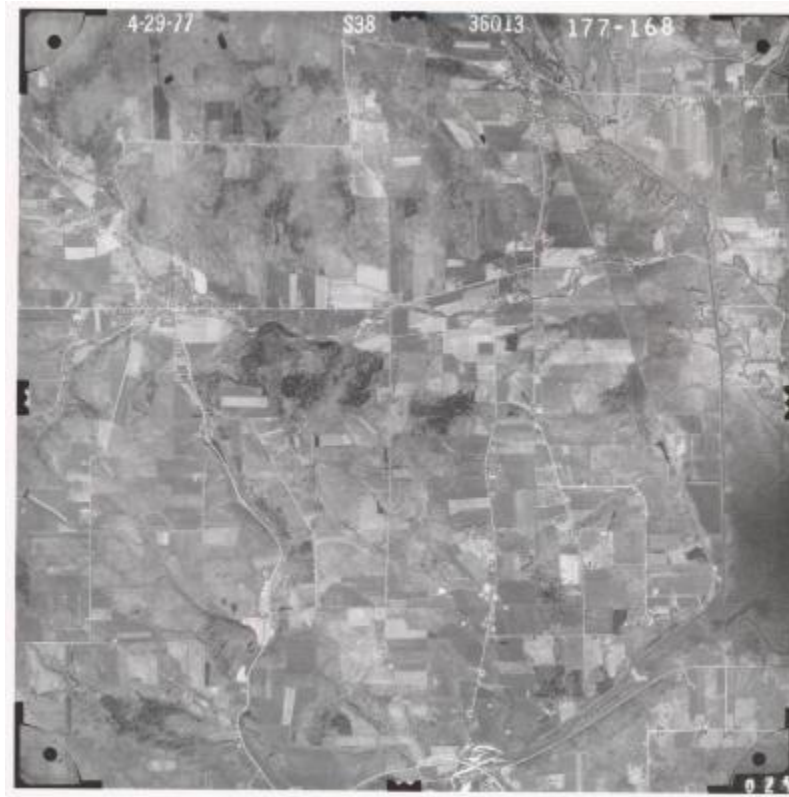


Aerial photograph of Kennedy USGS quadrangle

**Identifier**

NYSA_B2009-09A_Kennedy_1977_177_168

Date

1977

Repository

New York State Archives

Source

New York State Archives. New York (State). Dept. of Transportation. Map Information Unit. Aerial photographs, [ca. 1930s-2000]. B2009-09A

Rights

This image is provided for education and research purposes. Rights may be reserved. Responsibility for securing permissions to distribute, publish, reproduce or other use rest with the user. For additional information see our [Copyright and Use Statement](#)

More From This Series

Department of Transportation Map Information Unit aerial photographs