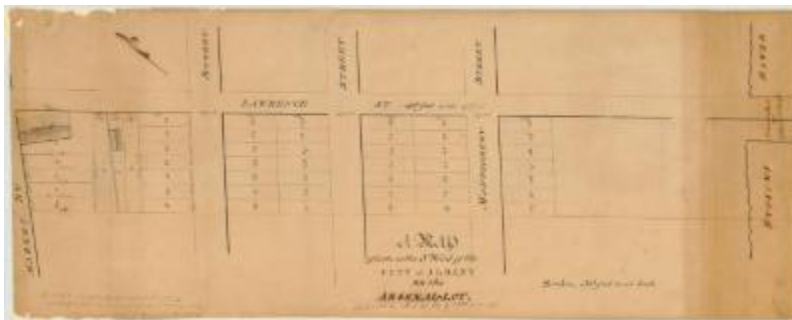


Map of lots in the 5th ward of the city of Albany, on the Arsenal lot. Map #4



Map of lots in the 5th ward of the city of Albany, on the Arsenal lot. [Copy from an old map of John R. Bleeker's]. Map shows area from Lawrence Street running down into the Hudson River.

Identifier

NYSA_A0273-78_4

Alternate Identifier

DMS ID Number: 178960

Date

circa 1826

Contributor

Bleeker, John R.

Repository

New York State Archives

Source

New York State Archives. New York (State). State Engineer and Surveyor. Survey maps of lands in New York State, ca. 1711-1913. Series A0273-78, Map #4.

Rights

This image is provided for education and research purposes. Rights may be reserved. Responsibility for securing permissions to distribute, publish, reproduce or other use rest with the user. For additional information see our [Copyright and Use Statement](#)

More From This Series

Survey maps of lands in New York State

Geographic Locations

Albany (is associated with)