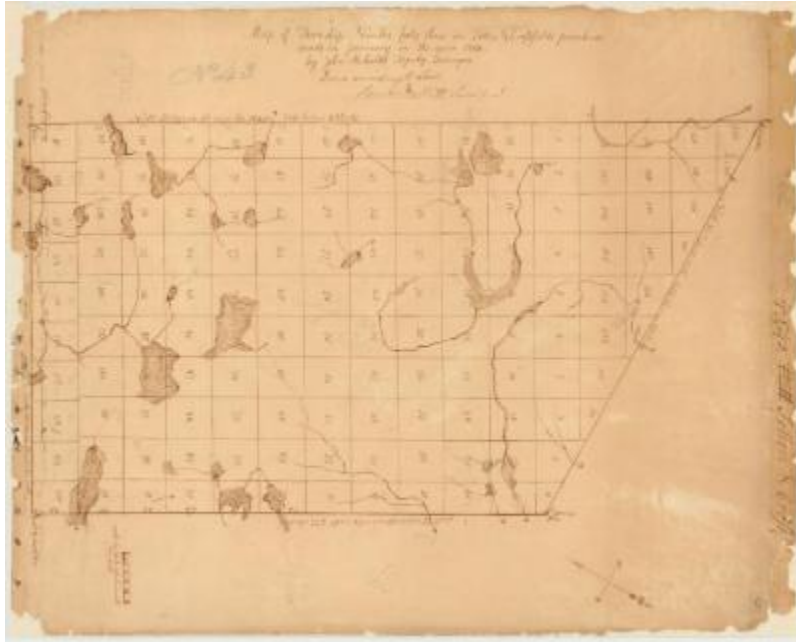


Map of Township number 43 in Totten and Crossfield's Purchase. Map #6, Part 2



Map of Township number 43 in Totten and Crossfield's Purchase, made in January in the year 1816 by John Richards, Deputy Surveyor.

Identifier

NYSA_A0273-78_6B

Alternate Identifier

DMS ID Number: 179145

Date

1816

Contributor

Richards, John (surveyor)

Repository

New York State Archives

Source

New York State Archives. New York (State). State Engineer and Surveyor. Survey maps of lands in New York State, ca. 1711-1913. Series A0273-78, Map #6B.

Rights

This image is provided for education and research purposes. Rights may be reserved. Responsibility for securing permissions to distribute, publish, reproduce or other use rest with the user. For additional information see our [Copyright and Use Statement](#)

More From This Series

Survey maps of lands in New York State

Geographic Locations

New York (is associated with)