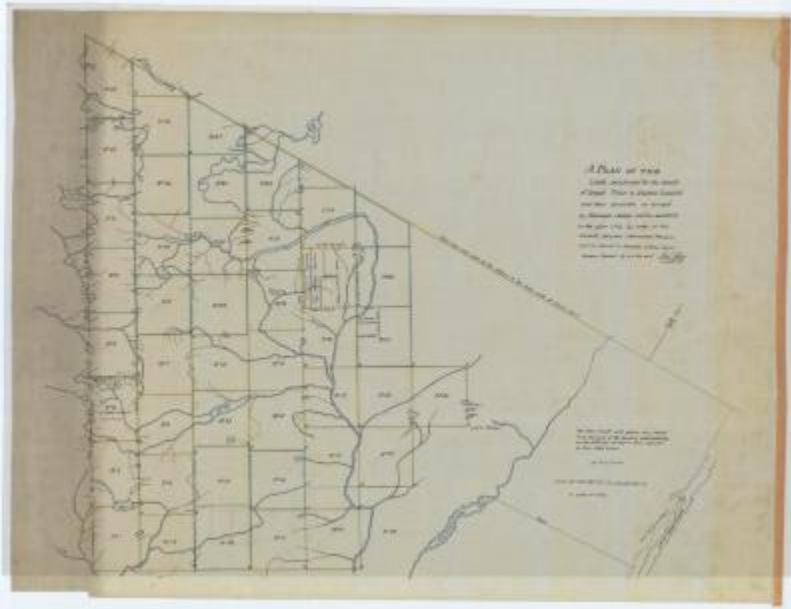


## Plan of lands purchased for the benefit of Stephen Crossfield and Joseph Totten (Copy). Map #205B



Plan of lands purchased for the benefit of Stephen Crossfield and Joseph Totten, and their associates as surveyed by Ebenezer Jessup and his assistants, in the year 1772. (Copy)

### Identifier

NYSA\_A0273-78\_205B

### Alternate Identifier

DMS ID Number: 184000

### Date

1772

### Contributor

Jessup, Ebenezer (surveyor)

### Repository

New York State Archives

### Source

New York State Archives. New York (State). State Engineer and Surveyor. Survey maps of lands in New York State, ca. 1711-1913. Series A0273-78, Map #205B.

### Rights

This image is provided for education and research purposes. Rights may be reserved. Responsibility for securing permissions to distribute, publish, reproduce or other use rest with the user. For additional information see our [Copyright and Use Statement](#)

### More From This Series

Survey maps of lands in New York State

### Geographic Locations

New York (is associated with)