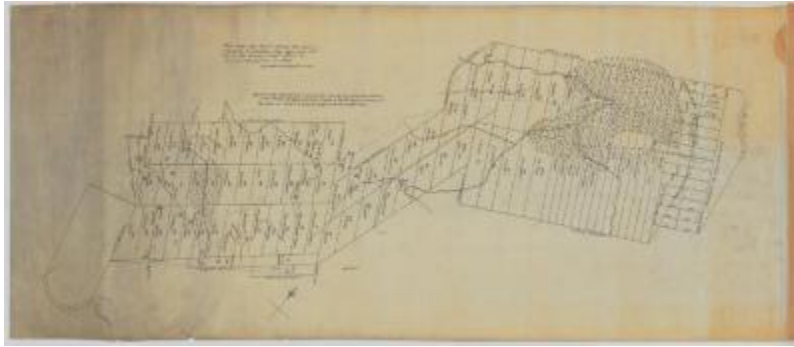


## Map of the Sacondaga Patent. Map #286 (Copy)



Map of the Sacondaga (now spelled Sacandaga) Patent. Montgomery County. [Now Fulton, Montgomery and Saratoga Counties]  
[Copy]

### Identifier

NYSA\_A0273-78\_286\_Copy

### Alternate Identifier

DMS ID Number: 184746

### Date

### Repository

New York State Archives

### Source

New York State Archives. New York (State). State Engineer and Surveyor. Survey maps of lands in New York State, ca. 1711-1913. Series A0273-78, Map #286 (copy).

### Rights

This image is provided for education and research purposes. Rights may be reserved. Responsibility for securing permissions to distribute, publish, reproduce or other use rest with the user. For additional information see our [Copyright and Use Statement](#)

### More From This Series

Survey maps of lands in New York State

### Geographic Locations

Saratoga County (is associated with)

Fulton County (is associated with)

Montgomery County (is associated with)