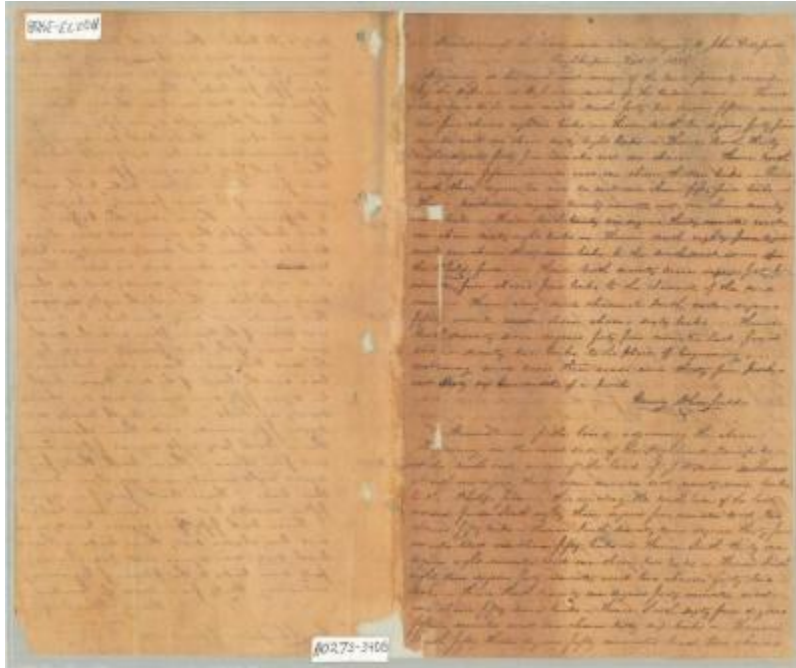


Document attachment with Map of the property of John Delafield. Map #340B_s1



Document attachment with Map of the property of John Delafield, situated in the Village of Poughkeepsie, Dutchess County. By Henry Whinfield, Engineer. July, 1836.

Identifier

NYSA_A0273-78_340B_s1

Alternate Identifier

DMS ID Number: 184993

Date

1836

Contributor

Whinfield, Henry (surveyor)

Repository

New York State Archives

Source

New York State Archives. New York (State). State Engineer and Surveyor. Survey maps of lands in New York State, ca. 1711-1913. Series A0273-78, Map #340B_s1.

Rights

This image is provided for education and research purposes. Rights may be reserved. Responsibility for securing permissions to distribute, publish, reproduce or other use rest with the user. For additional information see our [Copyright and Use Statement](#)

More From This Series

Survey maps of lands in New York State

Geographic Locations

Dutchess County (is associated with)