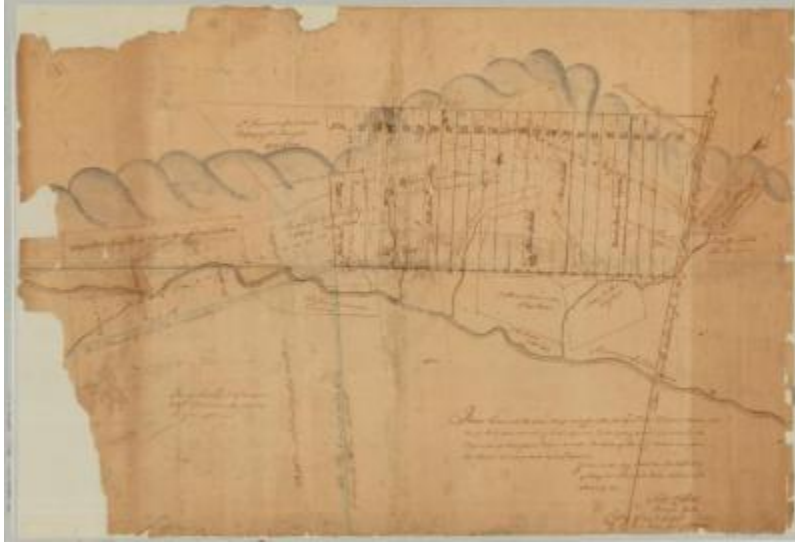


Map of Minisink Patent. Map #374



Map of Minisink Patent. By Alex'r Colden, Surveyor General. Dated May 30th, 1771.

Identifier

NYSA_A0273-78_374

Alternate Identifier

DMS ID Number: 185084

Date

May 30 1771

Contributor

Colden, Alexander (surveyor)

Repository

New York State Archives

Source

New York State Archives. New York (State). State Engineer and Surveyor. Survey maps of lands in New York State, ca. 1711-1913. Series A0273-78, Map #374.

Rights

This image is provided for education and research purposes. Rights may be reserved. Responsibility for securing permissions to distribute, publish, reproduce or other use rest with the user. For additional information see our [Copyright and Use Statement](#)

More From This Series

Survey maps of lands in New York State

Geographic Locations

Orange County (is associated with)

Sullivan County (is associated with)