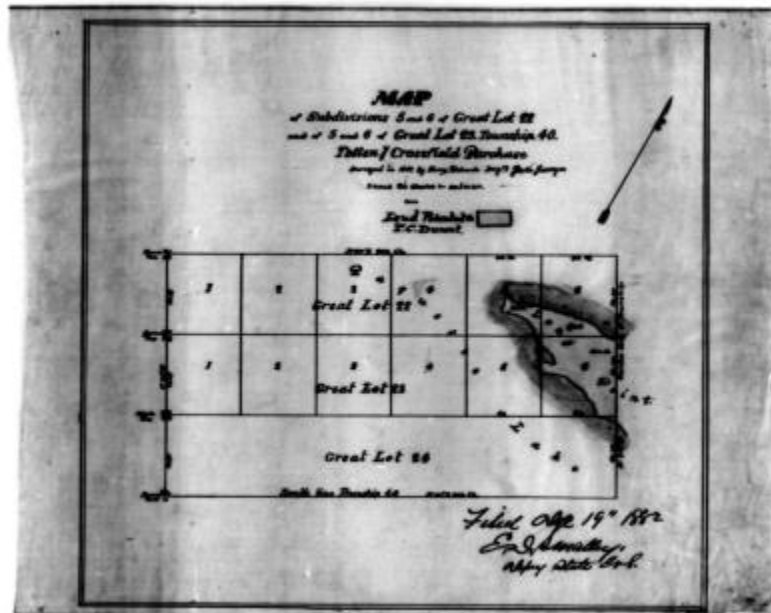


Long Point in Raquette Lake, Hamilton County. Map #501



Long Point in Raquette Lake, Hamilton County surveyed in 1882 by Harry Richards. This map is not in the holdings of the New York State Archives. The digital image was created by scanning a black and white aperture card.

Identifier

NYSA_A0273-78_501

Alternate Identifier

DMS ID Number: 186107

Date

1882

Repository

New York State Archives

Source

New York State Archives. New York (State). State Engineer and Surveyor. Survey maps of lands in New York State, ca. 1711-1913. Series A0273-78, Map #501.

Rights

This image is provided for education and research purposes. Rights may be reserved. Responsibility for securing permissions to distribute, publish, reproduce or other use rest with the user. For additional information see our [Copyright and Use Statement](#)

More From This Series

Survey maps of lands in New York State

Geographic Locations

Hamilton County (is associated with)