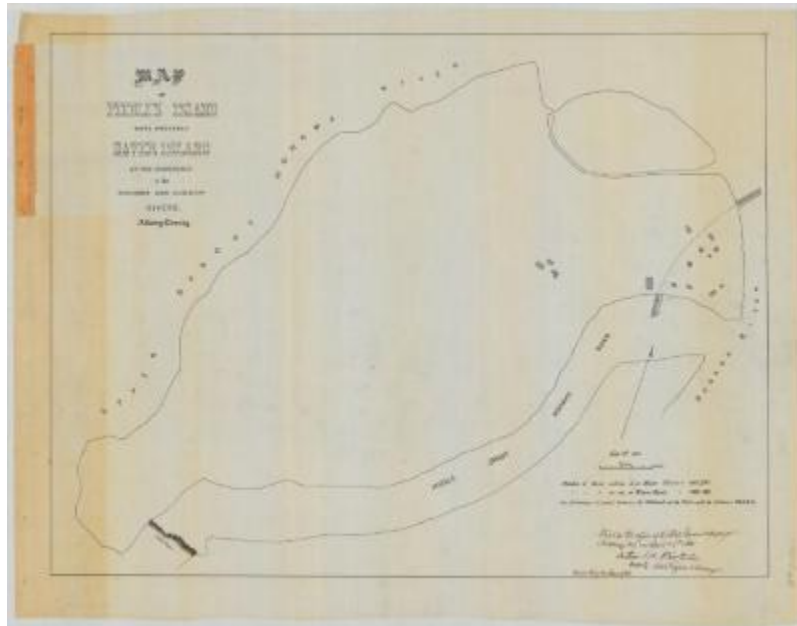


## Mohawk river Confluence and Haver or Peebles island at mouth of Mohawk. Map #529B



Hudson and Mohawk river Confluence, 1843, engraved. Published by L. Bliss, Lansingburgh. Also Haver or Peebles Island at mouth of Mohawk. 1860.

### Identifier

NYSA\_A0273-78\_529B

### Alternate Identifier

DMS ID Number: 186216

### Date

1843 – 1860

### Repository

New York State Archives

### Source

New York State Archives. New York (State). State Engineer and Surveyor. Survey maps of lands in New York State, ca. 1711-1913. Series A0273-78, Map #529B.

### Rights

This image is provided for education and research purposes. Rights may be reserved. Responsibility for securing permissions to distribute, publish, reproduce or other use rest with the user. For additional information see our [Copyright and Use Statement](#)

### More From This Series

Survey maps of lands in New York State

### Geographic Locations

Albany County (is associated with)

Hudson River (is associated with)