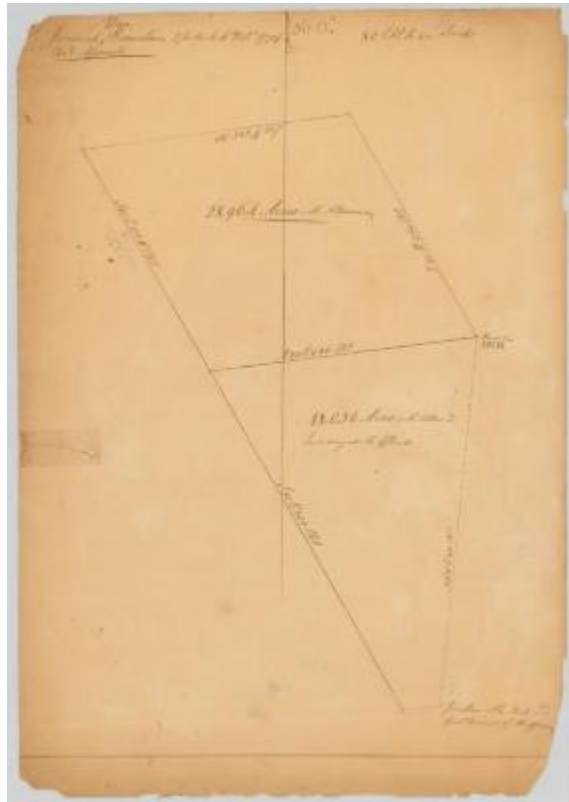


Survey of land for J. Van Rensselaer. 1774, 28,964 acres and 18,036 acres and allowance, including all islands. Map #605



Survey of land for J. Van Rensselaer. 1774, 28,964 acres and 18,036 acres and allowance, including all islands.

Identifier

NYSA_A0273-78_605

Alternate Identifier

DMS ID Number: 186316

Date

1774

Repository

New York State Archives

Source

New York State Archives. New York (State). State Engineer and Surveyor. Survey maps of lands in New York State, ca. 1711-1913. Series A0273-78, Map #605.

Rights

This image is provided for education and research purposes. Rights may be reserved. Responsibility for securing permissions to distribute, publish, reproduce or other use rest with the user. For additional information see our [Copyright and Use Statement](#)

More From This Series

Survey maps of lands in New York State

Geographic Locations

New York (is associated with)