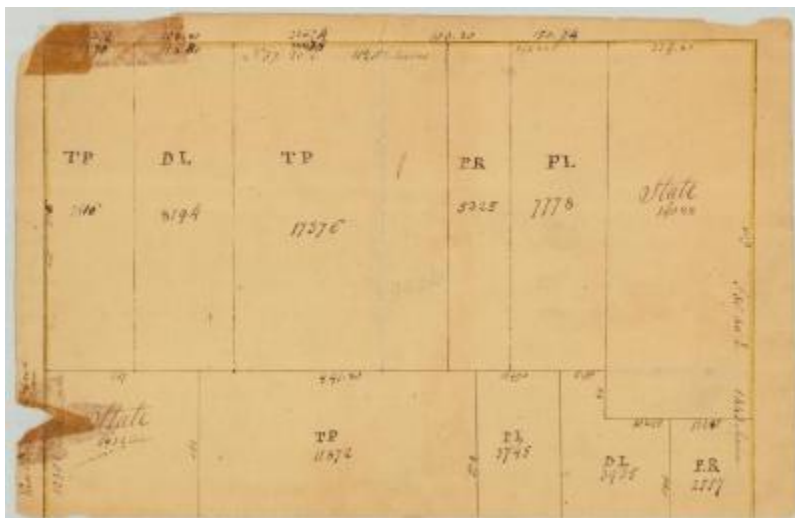


Part of map No. 732. Map #733



Part of map No. 732.

Identifier

NYSA_A0273-78_733

Alternate Identifier

DMS ID Number: 186606

Date

1788

Repository

New York State Archives

Source

New York State Archives. New York (State). State Engineer and Surveyor. Survey maps of lands in New York State, ca. 1711-1913. Series A0273-78, Map #733.

Rights

This image is provided for education and research purposes. Rights may be reserved. Responsibility for securing permissions to distribute, publish, reproduce or other use rest with the user. For additional information see our [Copyright and Use Statement](#)

More From This Series

Survey maps of lands in New York State

Geographic Locations

Staten Island (is associated with)