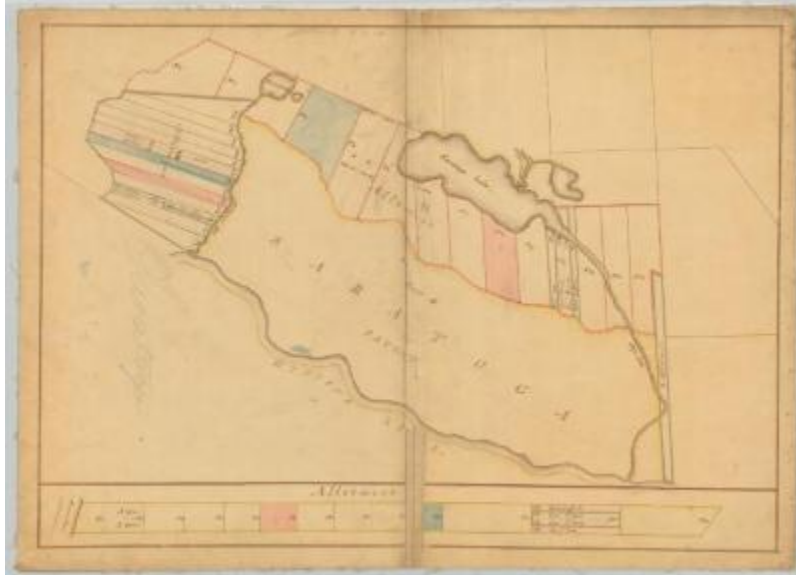


Kayaderosera Patent, 8th, 9th and 10th allotment. Part of Saratoga Patent. Map #882



Kayaderosera Patent, 8th, 9th and 10th allotment. Part of Saratoga Patent.

Identifier

NYSA_A0273-78_882

Alternate Identifier

DMS ID Number: 186790

Date

1711 – circa 1913

Repository

New York State Archives

Source

New York State Archives. New York (State). State Engineer and Surveyor. Survey maps of lands in New York State, ca. 1711-1913. Series A0273-78, Map #882.

Rights

This image is provided for education and research purposes. Rights may be reserved. Responsibility for securing permissions to distribute, publish, reproduce or other use rest with the user. For additional information see our [Copyright and Use Statement](#)

More From This Series

Survey maps of lands in New York State

Geographic Locations

New York (is associated with)