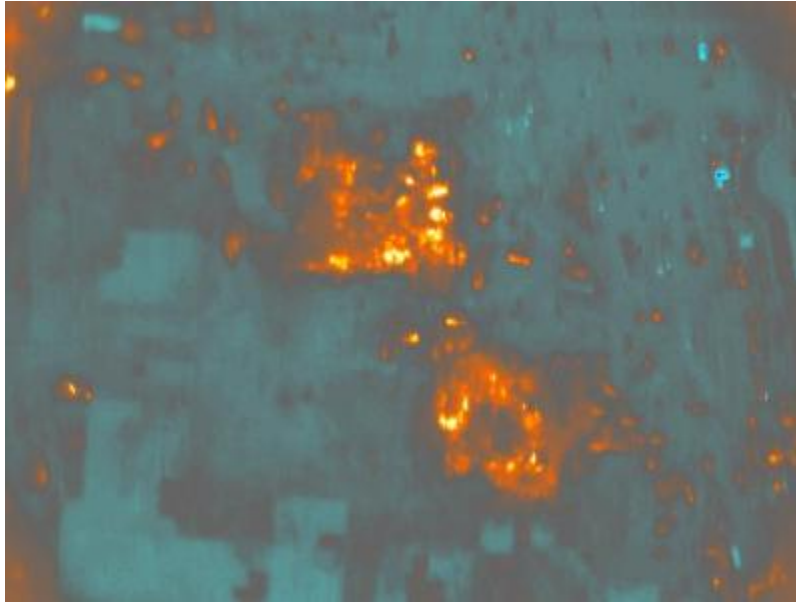


[Thermal mosaic of World Trade Center site, 10/20/2001]



No. 4 in a sequence of thermal mosaics of World Trade Center site taken on October 20, 2001, more than a month after the September 11 terrorist attack upon the site. These mosaics combine multiple thermal images, which were imported into a Geographic Information System (GIS), placed atop current orthophotographs of the World Trade Center site, and had temperature values colorized. These overlays helped emergency personnel plan work and avoid areas that remained dangerously hot.;Well after all of the fires at the site had been put out, temperatures at the footprints of 1 and 2 World Trade Center ranged from 110-150 degrees Fahrenheit.

Identifier

NYSA_B1920-04_20oct_thermal_mosaic_Seq34

Alternate Identifier

DMS ID Number: 183050

Date

October 20 2001

Contributor

Earthdata (Firm)

Repository

New York State Archives

Source

New York State Archives. New York (State). Office for Technology. World Trade Center geospatial data, 2001. Series B1920-04, Folder 20oct_thermal_mosaic, Image Seq34.

Rights

This image is provided for education and research purposes. Rights may be reserved. Responsibility for securing permissions to distribute, publish, reproduce or other use rest with the user. For additional information see our [Copyright and Use Statement](#)

More From This Series

World Trade Center geospatial data

Geographic Locations

Manhattan (is associated with)