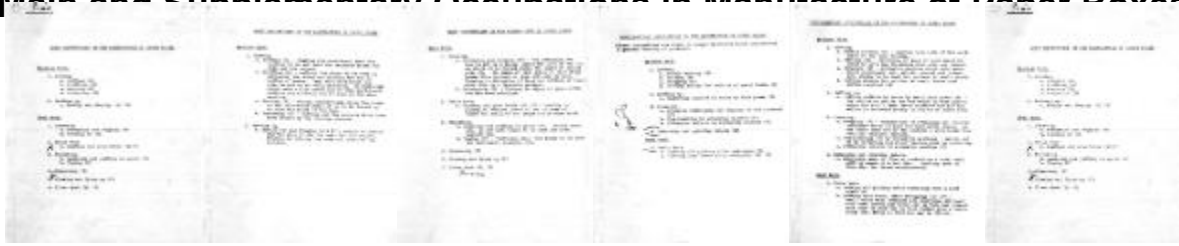


Main and Supplementary Occupations in Manufacture of Paper Boxes



A list of occupations involved in manufacturing paper boxes. The list categorizes the types of jobs, describes each job, and labels each job as one performed by men, by women, or by both genders.

Identifier

NYSA_A3010-77_B1_F1_2

Alternate Identifier

DMS ID Number: 143257

Date

circa 1913

Repository

New York State Archives

Source

New York State Archives. Factory Investigating Commission. List of businesses, occupations, and code numbers used in the Wage Investigation, [ca. 1913-1914]. A3010-77, Box 1, Folder 1.

Rights

This image is provided for education and research purposes. Rights may be reserved. Responsibility for securing permissions to distribute, publish, reproduce or other use rest with the user. For additional information see our [Copyright and Use Statement](#)

More From This Series

Lists of businesses, occupations, and code numbers used in the Wage Investigation

Geographic Locations

New York (is associated with)