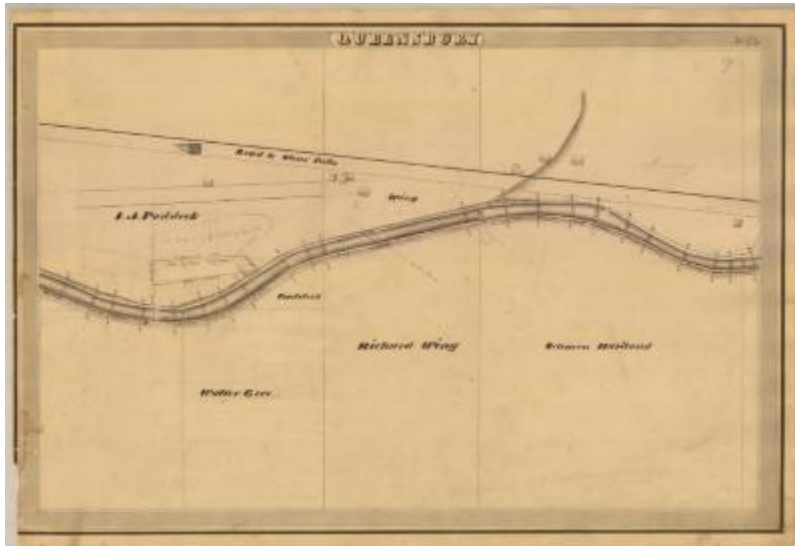


Erie and Champlain Canal Feeders, Queensbury showing Paddock and Wing



This is an ink, wash and charcoal map of a section of the Champlain Canal Feeder in Queensbury. It shows a bridge, eight buildings, the Road to Glens Falls and an unidentified road. The red lines indicate courses and distances. The blue lines indicate canal right-of-way. The map also shows the properties of I.A. Paddock, Richard Wing, Solomon Haviland and Walter Gere.

Identifier

NYSA_A0848-77_MC7_DR11_V11_21_53

Alternate Identifier

DMS ID Number: 150023

Date

1834

Repository

New York State Archives

Source

New York State Archives, A0848-77, Canal System Survey Maps, 1832-1843, Map no. 21-53

Rights

This image is provided for education and research purposes. Rights may be reserved. Responsibility for securing permissions to distribute, publish, reproduce or other use rest with the user. For additional information see our [Copyright and Use Statement](#)

More From This Series

Canal Commissioners canal system survey maps

Geographic Locations

Warren County (is associated with)

Champlain Canal (is associated with)