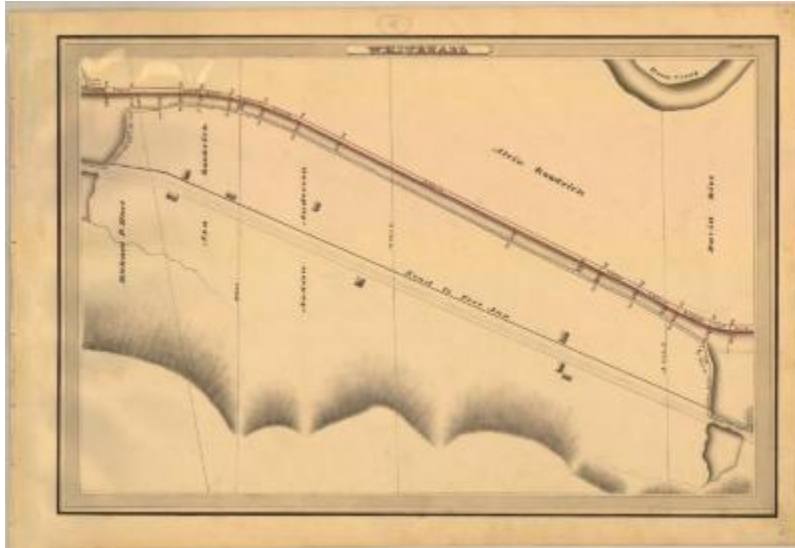


## Champlain Canal Survey, Whitehall showing Goodrich and Rice



This is an ink, wash and charcoal map of a section of the Champlain Canal in Whitehall. It shows Wood Creek, two large basins, a stream, two bridges, eight buildings, and the Road to Fort Ann. The red lines indicate courses and distances. The blue lines indicate canal right-of-way. The map also shows the properties of Richard P. Hart, Asa Goodrich, Alvin Goodrich, Andrew Anderson and David Rice.

### Identifier

NYSA\_A0848-77\_MC7\_DR12\_V12\_CHAM1\_6

### Alternate Identifier

DMS ID Number: 148193

### Date

1830

### Repository

New York State Archives

### Source

New York State Archives, A0848-77, Canal System Survey Maps, 1832-1843, Map no. CHAM1-6

### Rights

This image is provided for education and research purposes. Rights may be reserved. Responsibility for securing permissions to distribute, publish, reproduce or other use rest with the user. For additional information see our [Copyright and Use Statement](#)

### More From This Series

Canal Commissioners canal system survey maps

### Geographic Locations

Washington County (is associated with)

Champlain Canal (is associated with)