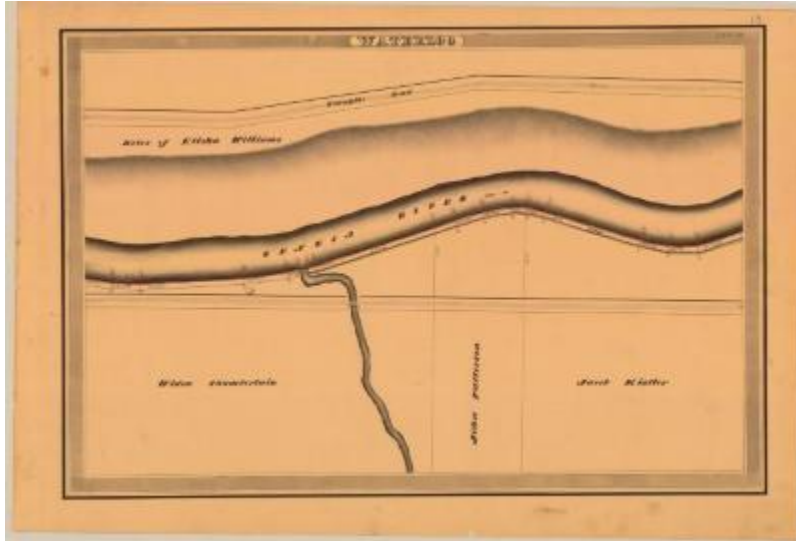


## Cayuga and Seneca Canal Survey, Waterloo showing Williams and Kistler



This is an ink, wash and charcoal map of a section of the Seneca Canal in Waterloo. It shows the Seneca River, a stream, two bridges, a building, a turnpike and an unidentified road. The red lines indicate courses and distances. The blue lines indicate canal right-of-way. The map also shows the properties of Jacob Kistler, John Patterson, Widow Chamberlain and the Heirs of Elisha Williams.

### Identifier

NYSA\_A0848-77\_MC7\_DR14\_V15\_CS\_13

### Alternate Identifier

DMS ID Number: 150887

### Date

1834

### Repository

New York State Archives

### Source

New York State Archives, A0848-77, Canal System Survey Maps, 1832-1843, Map no. CS-13

### Rights

This image is provided for education and research purposes. Rights may be reserved. Responsibility for securing permissions to distribute, publish, reproduce or other use rest with the user. For additional information see our [Copyright and Use Statement](#)

### More From This Series

New York State Canal Commissioners canal system survey maps

### Geographic Locations

Seneca County (is associated with)