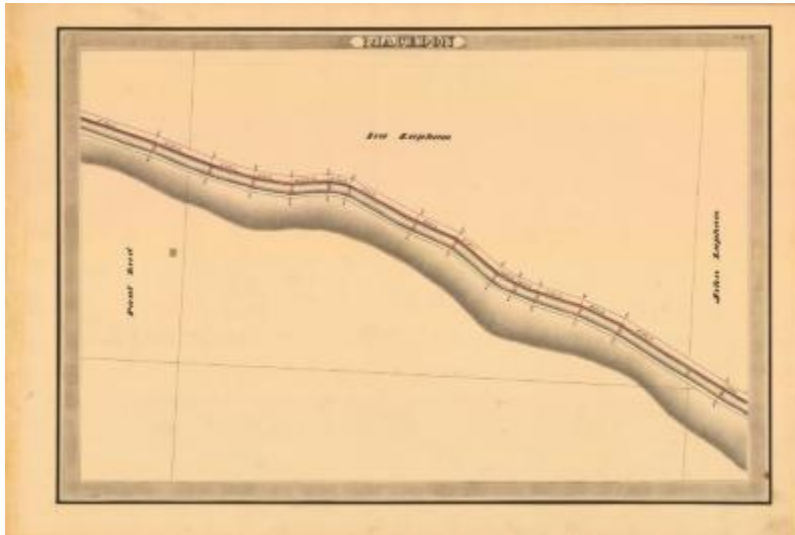


Erie Canal Survey, Macedon showing Reed and Lapham



This is an ink, wash and charcoal map of a section of the Erie Canal in Macedon. It shows a stretch of the canal running diagonally across the map and a lone building. The red lines indicate courses and distances. The blue lines indicate canal right-of-way. The map also shows the properties of Paul Reed, Ira Lapham and John Lapham.

Identifier

NYSA_A0848-77_MC7_DR4_V4_E4_18

Alternate Identifier

DMS ID Number: 145794

Date

1834

Repository

New York State Archives

Source

New York State Archives, A0848-77, Canal System Survey Maps, 1832-1843, Map no. E4-18

Rights

This image is provided for education and research purposes. Rights may be reserved. Responsibility for securing permissions to distribute, publish, reproduce or other use rest with the user. For additional information see our [Copyright and Use Statement](#)

More From This Series

Canal Commissioners canal system survey maps

Geographic Locations

Erie Canal (is associated with)

Wayne County (is associated with)