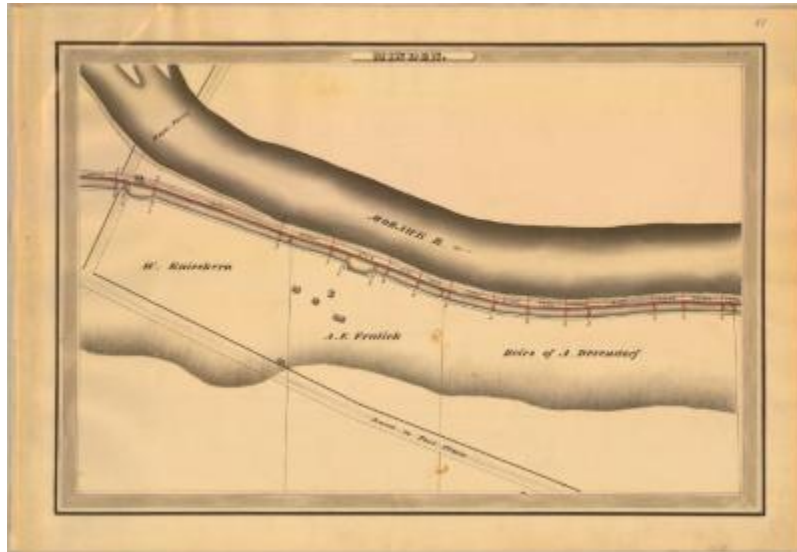


Erie Canal Survey, Minden showing Knieskern and Devendorf



This is an ink, wash and charcoal map of a section of the Erie Canal in Minden. It shows the Mohawk River, two rounded basins, a bridge, six buildings, the Road to Fort Plain and an unidentified road that leads to a rope ferry. The red lines indicate courses and distances. The blue lines indicate canal right-of-way. The map also shows the properties of A.F. Fralick, W. Knieskern and the Heirs of A. Devendorf.

Identifier

NYSA_A0848-77_MC7_DR8_V8_E8_51

Alternate Identifier

DMS ID Number: 147136

Date

1834

Repository

New York State Archives

Source

New York State Archives, A0848-77, Canal System Survey Maps, 1832-1843, Map no. E8-51

Rights

This image is provided for education and research purposes. Rights may be reserved. Responsibility for securing permissions to distribute, publish, reproduce or other use rest with the user. For additional information see our [Copyright and Use Statement](#)

More From This Series

Canal Commissioners canal system survey maps

Geographic Locations

Erie Canal (is associated with)

Montgomery County (is associated with)