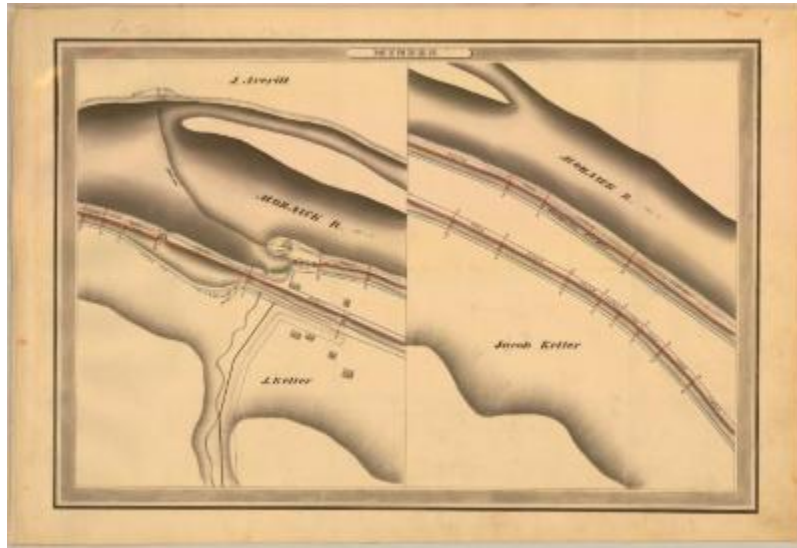


Erie Canal Survey, Minden showing two views of Canal, Mohawk River and Dam



This is an ink, wash and charcoal map of a section of the Erie Canal in Minden. The map is split into two views. The first view shows the Mohawk River, a dam, a guard lock, a bridge, seven buildings including a saw mill and an unidentified road. The second view shows the Mohawk River and a navigable feeder. The red lines indicate courses and distances. The blue lines indicate canal right-of-way. The map also shows the properties of J. Averill and Jacob Keller.

Identifier

NYSA_A0848-77_MC7_DR9_V9_E9_1

Alternate Identifier

DMS ID Number: 147142

Date

1834

Repository

New York State Archives

Source

New York State Archives, A0848-77, Canal System Survey Maps, 1832-1843, Map no. E9-1

Rights

This image is provided for education and research purposes. Rights may be reserved. Responsibility for securing permissions to distribute, publish, reproduce or other use rest with the user. For additional information see our [Copyright and Use Statement](#)

More From This Series

Canal Commissioners canal system survey maps

Geographic Locations

Erie Canal (is associated with)

Montgomery County (is associated with)