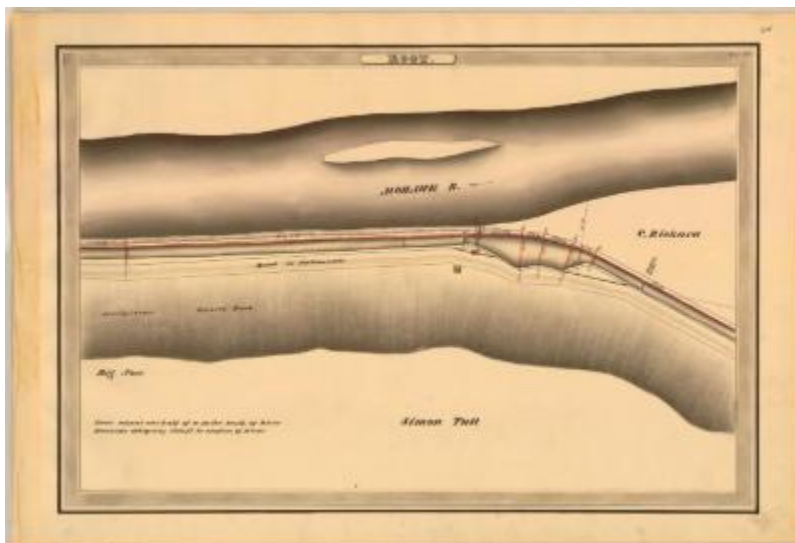


Erie Canal Survey, Root showing Gneiss Rock and information about a cave



This is an ink, wash and charcoal map of a section of the Erie Canal in Root. It shows the Mohawk River, gneiss rock, information about a nearby cave, a safety gate, a bridge, two buildings and the Road to Fultonville. The red lines indicate courses and distances. The blue lines indicate canal right-of-way. The map also shows the properties of Simon Tull and C. Rickard.

Identifier

NYSA_A0848-77_MC7_DR9_V9_E9_20

Alternate Identifier

DMS ID Number: 147194

Date

1834

Repository

New York State Archives

Source

New York State Archives, A0848-77, Canal System Survey Maps, 1832-1843, Map no. E9-20

Rights

This image is provided for education and research purposes. Rights may be reserved. Responsibility for securing permissions to distribute, publish, reproduce or other use rest with the user. For additional information see our [Copyright and Use Statement](#)

More From This Series

Canal Commissioners canal system survey maps

Geographic Locations

Erie Canal (is associated with)

Montgomery County (is associated with)