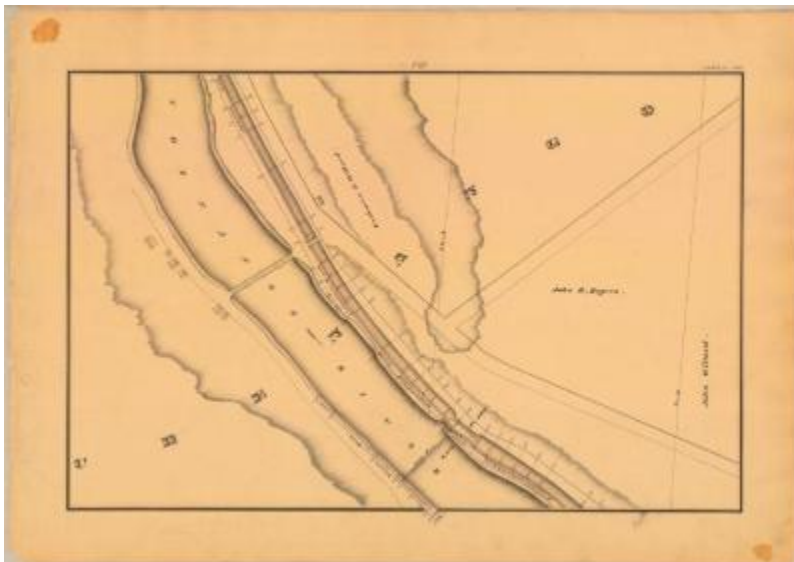


## Chenango Canal Survey, Chenango showing Willard, Rogers and Lock No. 107



This is an ink, wash and charcoal map of a section of the Chenango Canal in Chenango. It shows the Chenango River, Lock No. 107, a channel that runs from the canal into the river, three bridges including one that spans the river, a state dam, a guard bank that runs along the rivers edge, seven buildings and two unidentified roads that meet. The red lines indicate courses and distances. The blue lines indicate canal right-of-way. The map also shows the properties of John B. Rogers, Cushman and Willard.

### Identifier

NYSA\_A0848-77\_MC8\_DR1\_V17\_CHEN2\_141

### Alternate Identifier

DMS ID Number: 151294

### Date

1838

### Repository

New York State Archives

### Source

New York State Archives, A0848-77, Canal System Survey Maps, 1832-1843, Map no. CHEN2-141

### Rights

This image is provided for education and research purposes. Rights may be reserved. Responsibility for securing permissions to distribute, publish, reproduce or other use rest with the user. For additional information see our [Copyright and Use Statement](#)

### More From This Series

Canal Commissioners canal system survey maps

### Geographic Locations

Broome County (is associated with)

New York City (is associated with)