

Senate Chamber in the State Capitol, Albany, NY

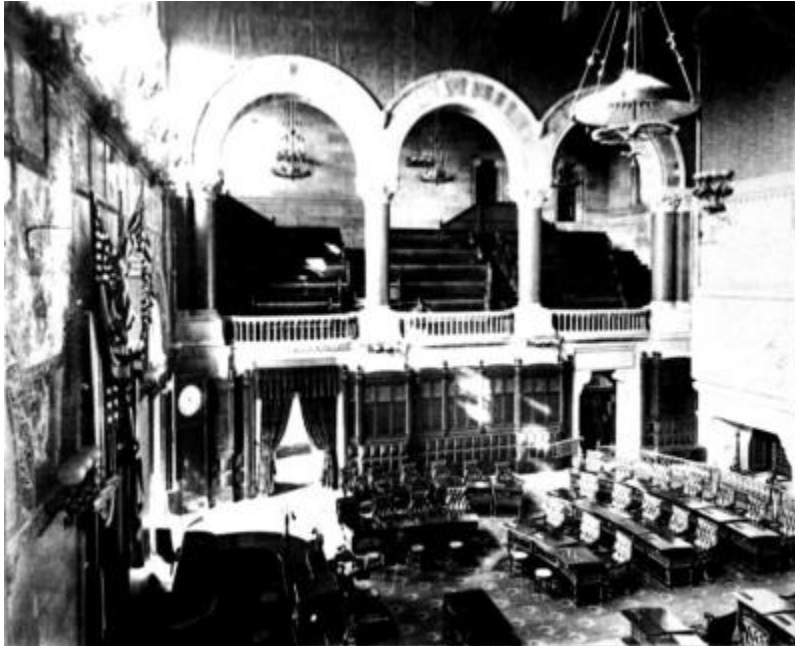


Image from photographic negative showing the Senate Chamber in the State Capitol. Albany, NY. (20 x 25.5 cm.)

Identifier

MSC_PRI4012_76

Alternate Identifier

DMS ID Number: 742

Date

circa 1890

Repository

New York State Library

Source

New York State Library Manuscripts and Special Collections, Photographic Negatives related to the Construction of the Capitol Building, Albany, N.Y. ca. 1869-1899. PRI 4012, folder 68, #76.

Rights

This record is not part of the New York State Archives' collection and is presented on our project partner's behalf for educational use only. Please contact the home repository for information on copyright and reproductions.

More From This Series

Photographic Negatives related to the Construction of the Capitol Building

Geographic Locations

Albany (is associated with)