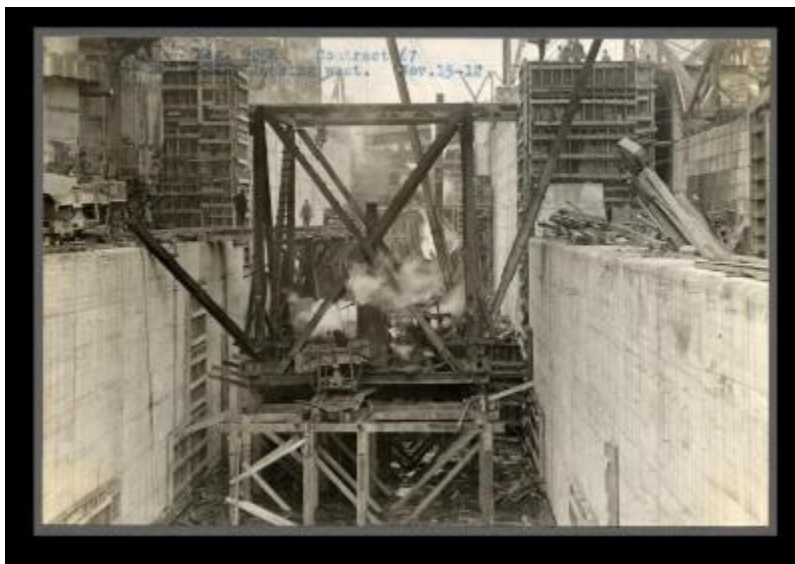


Erie Canal: locks 34 and 35 and prism at Lockport



Contract 67. A view of the new locks, looking west.

Identifier

NYSA_11833-97_C067_09236

Alternate Identifier

Negative Numbers: 9236

Date

November 15 1912

Repository

New York State Archives

Source

New York State Archives. New York (State). State Engineer and Surveyor. Barge Canal construction photographs. 11833-97. Contract 67, p. 71, negative 9236.

Rights

This image is provided for education and research purposes. Rights may be reserved. Responsibility for securing permissions to distribute, publish, reproduce or other use rest with the user. For additional information see our [Copyright and Use Statement](#)

More From This Series

Barge Canal construction photographs