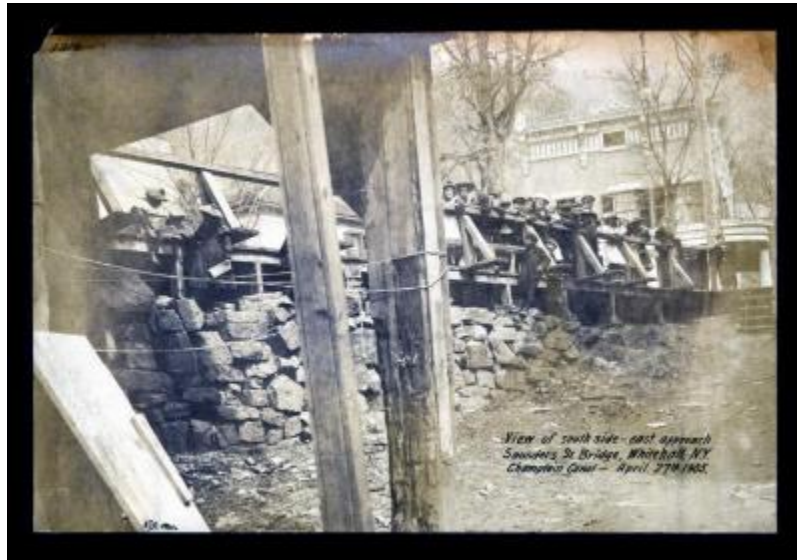


Champlain Canal - Eastern Divison preliminary photograph



Miscellaneous Preliminary Champlain Canal - Eastern Divison View of south side - east approach, Saunders Street Bridge, Whitehall, N.Y. Champlain Canal. HJR Photo.

Identifier

NYSA_11833-97_MP_Champ_East_01316

Alternate Identifier

Negative Numbers: 1316

Date

April 27 1905

Repository

New York State Archives

Source

New York State Archives. New York (State). State Engineer and Surveyor. Barge Canal construction photographs. 11833-97. Miscellaneous Preliminary Champlain Canal - Eastern Division, p. 30, negative 1316.

Rights

This image is provided for education and research purposes. Rights may be reserved. Responsibility for securing permissions to distribute, publish, reproduce or other use rest with the user. For additional information see our [Copyright and Use Statement](#)

More From This Series

Barge Canal construction photographs