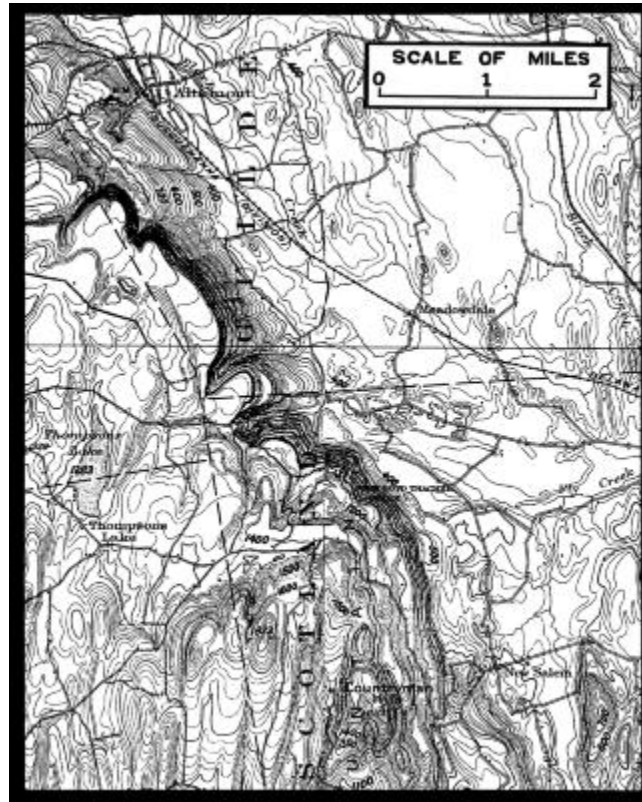


## Part of U.S.G.S. Map, Albany-Berne Sheet: Helderberg Escarpment Southeast of Altamont, N.Y.



Topographic map of an area of Albany County, New York, showing the Helderberg Escarpment from Altamont in the northwest to New Salem in the southeast. The map includes contour lines, elevations, towns, bodies of water, and railroads.

### Identifier

NYSA\_A3045-78\_10627

### Alternate Identifier

DMS ID Number: 144628

Negative Numbers: 10627

### Date

1924

### Contributor

Geological Survey (U.S.)

### Repository

New York State Archives

### Source

New York State Archives. Education Dept. Division of Visual Instruction. Instructional lantern slides, 1911-1925, A3045-78, neg. 10627.

### Rights

This image is provided for education and research purposes. Rights may be reserved. Responsibility for securing permissions to distribute, publish, reproduce or other use rest with the user. For additional information see our [Copyright and Use Statement](#)

### More From This Series

Division of Visual Instruction instructional lantern slides

**Geographic Locations**

Albany County (is associated with)