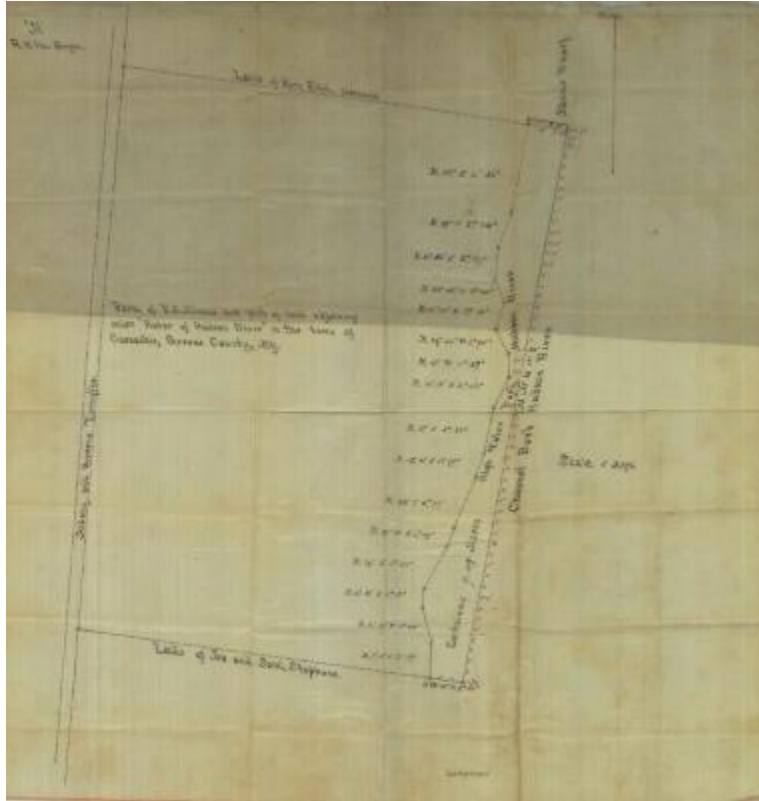


Survey of lands under water for Lampman, Adelaide B.



Identifier

NYSA_B2321-11_18800921_Lampman_01

Date

September 21 1880

Contributor

Lampman, Adelaide B. (Applicant)

Repository

New York State Archives

Source

New York State Archives, New York State Office of General Services Division of Land Utilization lands under water application files, Series B2321, Box 13.

Rights

This image is provided for education and research purposes. Rights may be reserved. Responsibility for securing permissions to distribute, publish, reproduce or other use rest with the user. For additional information see our [Copyright and Use Statement](#)

More From This Series

Lands under water application files

Geographic Locations

Greene County (is associated with)