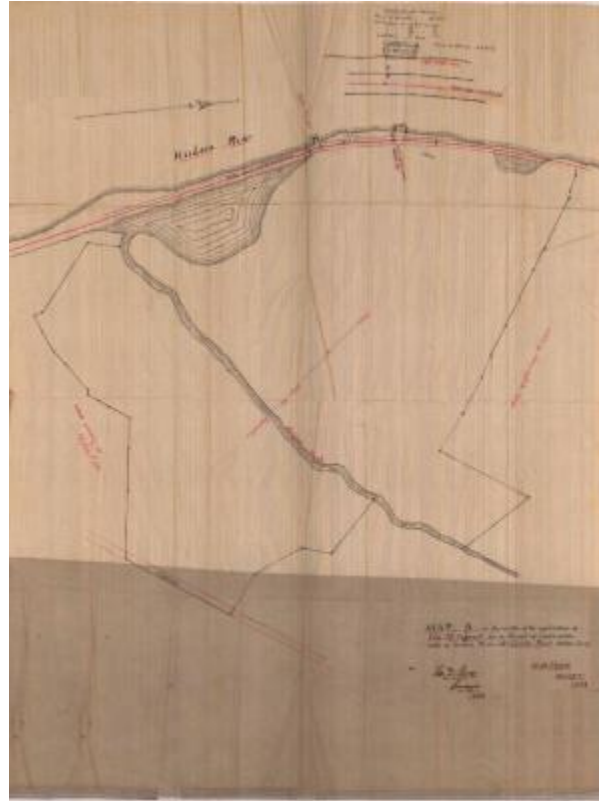


## Survey of lands under water for Ida M. Ingersoll

**Identifier**

NYSA\_B2321-11\_18831228\_Ingersoll\_01

**Date**

December 28 1883

**Contributor**

Ida M. Ingersoll (Applicant)

**Repository**

New York State Archives

**Source**

New York State Archives, New York State Office of General Services Division of Land Utilization lands under water application files, Series B2321, Box 15.

**Rights**

This image is provided for education and research purposes. Rights may be reserved. Responsibility for securing permissions to distribute, publish, reproduce or other use rest with the user. For additional information see our [Copyright and Use Statement](#)

**More From This Series**

Lands under water application files

**Geographic Locations**

Dutchess County (is associated with)