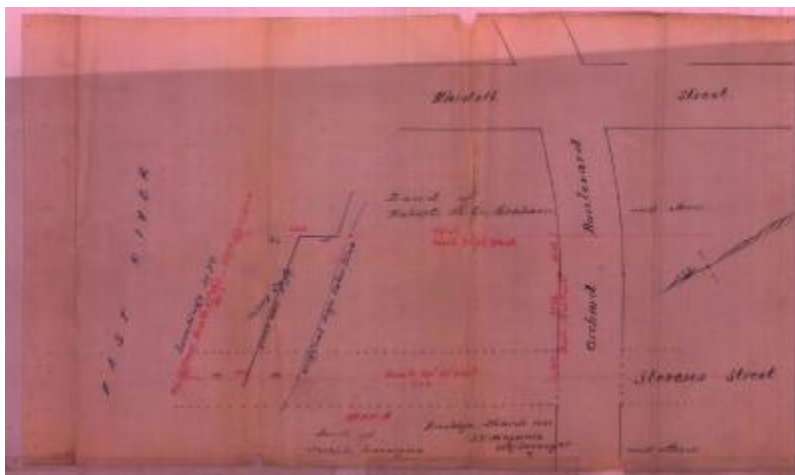


## Survey of lands under water for Francis W. Blackwell & Emma L. Tisdale, et al



### Identifier

NYSA\_B2321-11\_18840401\_Blackwell-Tisdale\_etal\_01

### Date

April 1 1884

### Contributor

Francis W. Blackwell & Emma L. Tisdale, et al (Applicant)

### Repository

New York State Archives

### Source

New York State Archives, New York State Office of General Services Division of Land Utilization lands under water application files, Series B2321, Box 15.

### Rights

This image is provided for education and research purposes. Rights may be reserved. Responsibility for securing permissions to distribute, publish, reproduce or other use rest with the user. For additional information see our [Copyright and Use Statement](#)

### More From This Series

Lands under water application files

### Geographic Locations

Queens County (is associated with)