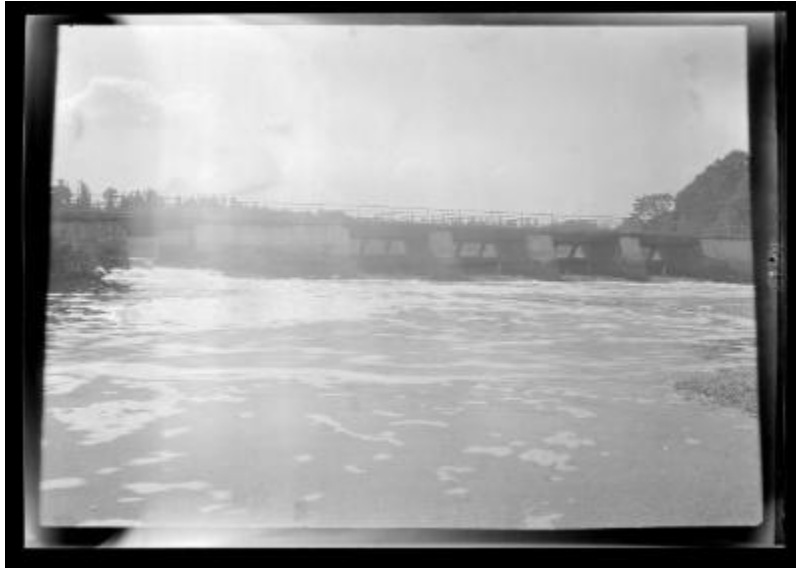


## Bayville Bridge connecting Bayville and Oyster Bay, N.Y.



View of the Bayville Bridge in Nassau County. The first drawbridge connecting Bayville and Oyster Bay was built in 1898 with subsequent renovations made in 1904 and 1922. This image was created to record the Conservation Commission's efforts in the Long Island shell fisheries.

**Identifier**

NYSA\_14297-87\_4289

**Alternate Identifier**

**DMS ID Number:** 146130

**Date**

circa 1926

**Repository**

New York State Archives

**Source**

New York State Archives, New York (State). Conservation Dept. Photographic prints and negatives, [ca. 1904-1949], 14297-87\_4289.

**Rights**

This image is provided for education and research purposes. Rights may be reserved. Responsibility for securing permissions to distribute, publish, reproduce or other use rest with the user. For additional information see our [Copyright and Use Statement](#)

**More From This Series**

Conservation Department photographic prints and negatives

**Geographic Locations**

Nassau County (is associated with)