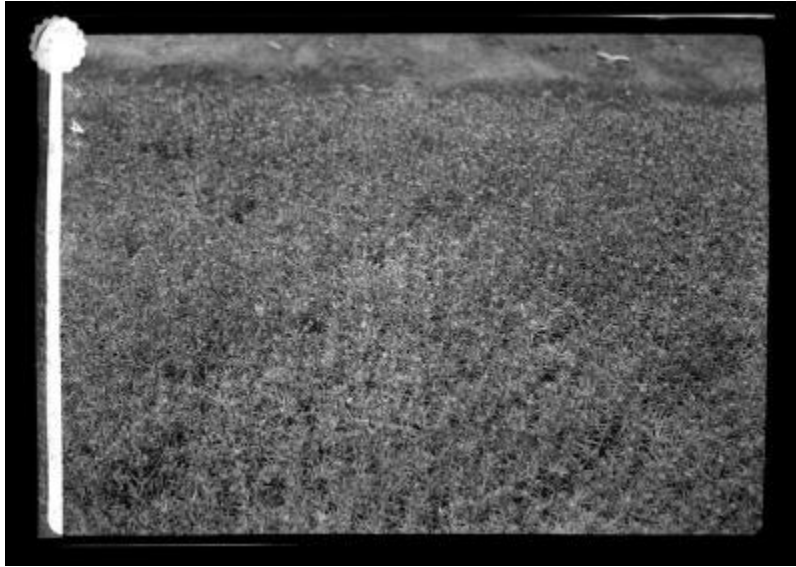


A fully stocked seed bed of White pine, Saranac Inn Nursery



View of a fully stocked seed bed of white pine (*Pinus strobus*) at the Saranac Inn Station conifer nursery in Franklin County. The nursery was established in 1902 and covered about seven acres. This image was created to record the reforestation efforts of the Forest, Fish and Game Commission.

Identifier

NYSA_14297-87_4359

Alternate Identifier

DMS ID Number: 143918

Date

1906

Contributor

A. Knechtel

Repository

New York State Archives

Source

New York State Archives, New York (State). Conservation Dept. Photographic prints and negatives, [ca. 1904-1949], 14297-87, No. 4359.

Rights

This image is provided for education and research purposes. Rights may be reserved. Responsibility for securing permissions to distribute, publish, reproduce or other use rest with the user. For additional information see our [Copyright and Use Statement](#)

More From This Series

Conservation Department photographic prints and negatives

Geographic Locations

Franklin County (is associated with)