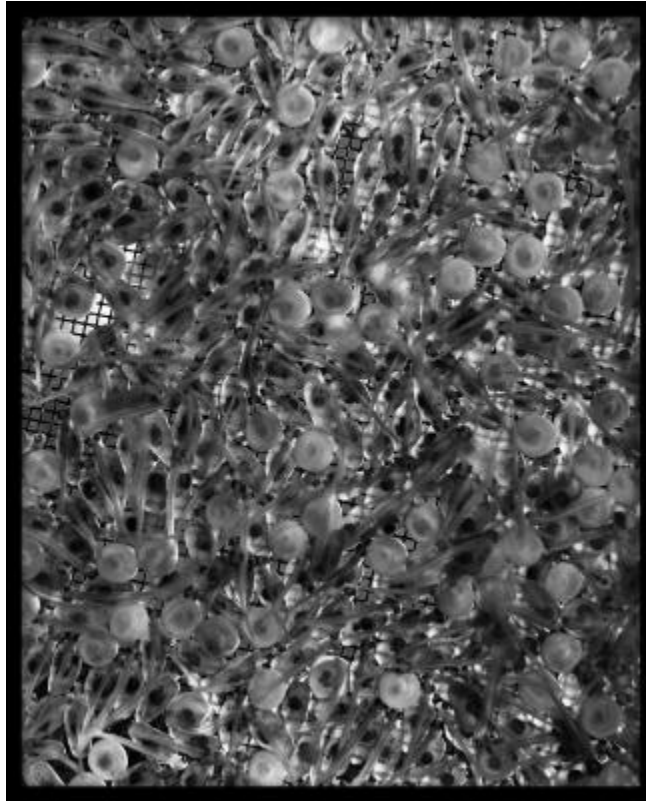


## Fish Eggs Hatching



View of several dozen fish fry recently emerged from their eggs with the yolks still attached. This may be the Oneida Fish Hatchery in Constantia, Oswego County. The date is unrecorded, but probably ca. 1920. This image was created to record the game hatchery activities of the New York State Forest, Fish, and Game Commission, Conservation Commission, or Conservation Department.

**Identifier**

NYSA\_14297-87\_495

**Alternate Identifier**

**DMS ID Number:** 140191

**Date**

circa 1920

**Repository**

New York State Archives

**Source**

New York State Archives, New York (State). Conservation Dept. Photographic prints and negatives, [ca. 1904-1949], 14297-87, SARA No. 495.

**Rights**

This image is provided for education and research purposes. Rights may be reserved. Responsibility for securing permissions to distribute, publish, reproduce or other use rest with the user. For additional information see our [Copyright and Use Statement](#)

**More From This Series**

Conservation Department photographic prints and negatives

**Geographic Locations**

Oswego County (is associated with)