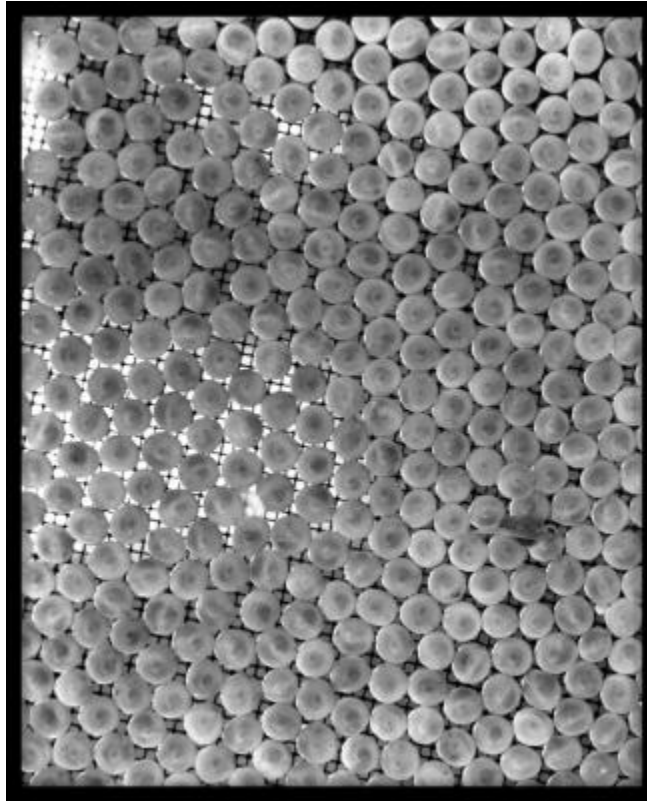


Fish Eggs About to Hatch



Fish eggs about to hatch in a hatchery. One fry has already emerged near the lower right. This may be at the Oneida Fish Hatchery in Constantia, Oswego County. The date is unrecorded, but probably ca. 1920. This image was created to record the game hatchery activities of the New York State Conservation Commission/Conservation Department.

Identifier

NYSA_14297-87_497

Alternate Identifier

DMS ID Number: 140190

Date

circa 1920

Repository

New York State Archives

Source

New York State Archives, New York (State). Conservation Dept. Photographic prints and negatives, [ca. 1904-1949], 14297-87, SARA No. 497.

Rights

This image is provided for education and research purposes. Rights may be reserved. Responsibility for securing permissions to distribute, publish, reproduce or other use rest with the user. For additional information see our [Copyright and Use Statement](#)

More From This Series

Conservation Department photographic prints and negatives

Geographic Locations

Oswego County (is associated with)