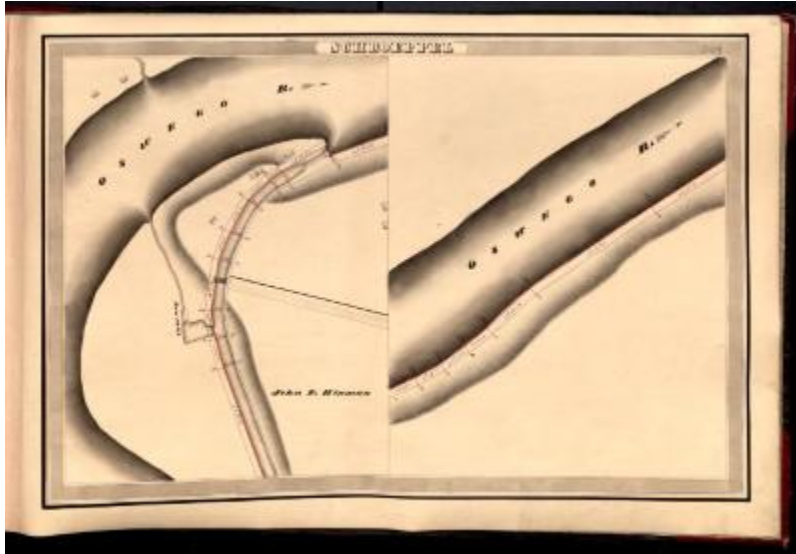


Oswego Canal Survey, Schroepfel



This is an ink, wash and charcoal map of a section of the Oswego Canal in Schroepfel. The map shows the Oswego River, a saw mill, a bridge, road, and the property of John E. Hinman. The map is split into two views. The red lines indicate courses and distances. The blue lines indicate canal right-of-way.

Identifier

NYSA_A0848-77_V27_O_29

Alternate Identifier

AMS Creator ID Number:

Repository

New York State Archives

Source

New York State Archives. New York (State). Canal Commissioners. Canal system survey maps. A0848-77. Volume 27, page 29.

Rights

This image is provided for education and research purposes. Rights may be reserved. Responsibility for securing permissions to distribute, publish, reproduce or other use rest with the user. For additional information see our [Copyright and Use Statement](#)

More From This Series

Canal Commissioners canal system survey maps